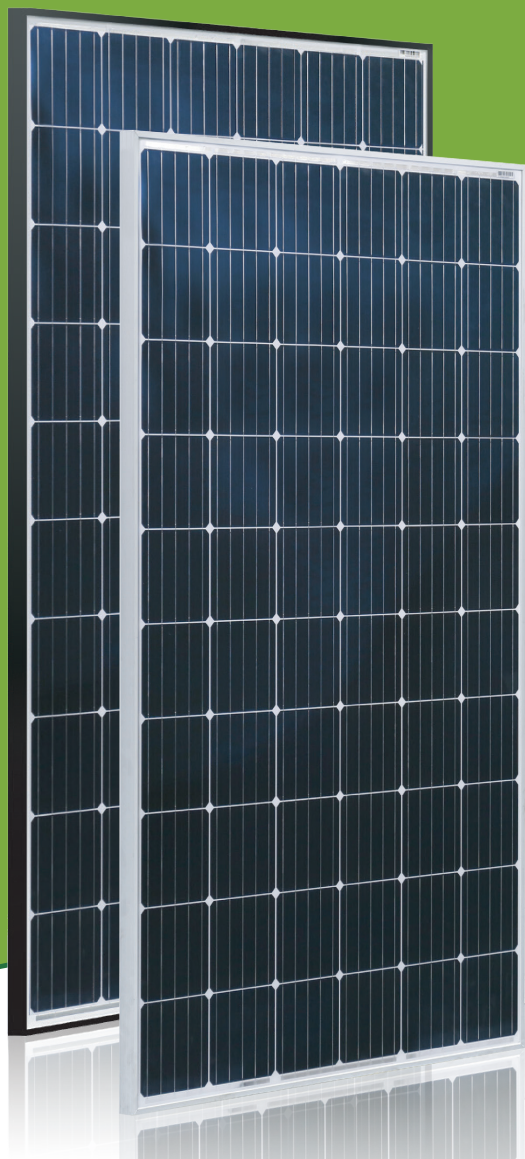


For Global Market



Optional: Black frame designed for the certain projects and applications (e.g. residential rooftop and so on)

COMPREHENSIVE CERTIFICATES



First solar company which passed the TUV Nord IEC/TS 62941 certification audit.

STARTM II 290W~305W

5BB-Monocrystalline PV Module

CHSM6610M Series

CHSM6610M/HV Series

CHSM6610M max system voltage 1000V standard

CHSM6610M/HV max system voltage 1500V standard

Tier 1

Bloomberg

No.1

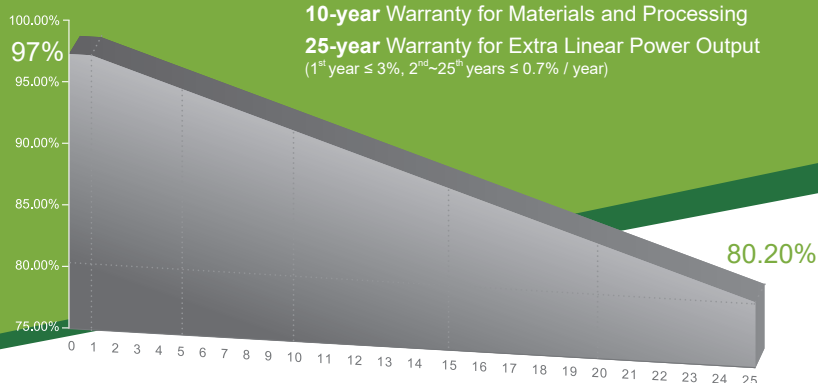
PHOTON

MunichRe

Insured

DNV GL

2017 TOP Performance



KEY FEATURES



OUTPUT POSITIVE TOLERANCE

Guaranteed 0~+5W positive tolerance ensures power output reliability.



INNOVATIONAL 5-BUSBAR CELLS

Reduces the cell series resistance and internal stress, decreases the risk of micro-crack and improves the module output.



INNOVATIVE PERC CELL TECHNOLOGY

Excellent cell efficiency and output.



LOWER TEMPERATURE COEFFICIENT

Improved temperature coefficient decreases power loss in the high temperature application.



HIGHER RELIABILITY AND DURABILITY

Effectively deals with harsh environments, such as sand, salt mist and ammonia resistance.



PASSED HAIL TEST

Certified to hail resistance: ice ball size (d=45mm) and ice ball velocity (v=30.7m/s).



PID RESISTANCE

Excellent PID resistance at 96 hours (@85°C /85%) test, and also can be improved to meet higher standards for the particularly harsh environment.



ELECTRICAL SPECIFICATIONS

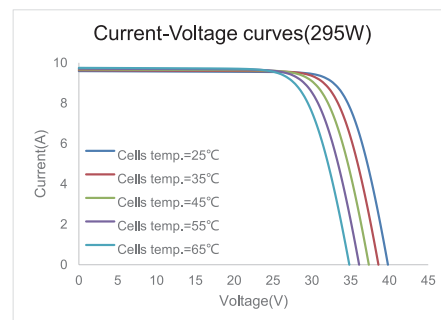
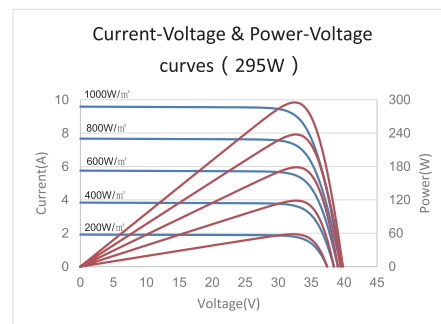
STC rated output (P_{mpp})*	290 Wp	295 Wp	300 Wp	305 Wp
Rated voltage (V_{mpp}) at STC	32.15 V	32.38 V	32.59 V	32.80 V
Rated current (I_{mpp}) at STC	9.03 A	9.12 A	9.21 A	9.30 A
Open circuit voltage (V_{oc}) at STC	39.45 V	39.81 V	39.90 V	40.05 V
Short circuit current (I_{sc}) at STC	9.54 A	9.59 A	9.68 A	9.72 A
Module efficiency	17.8%	18.1%	18.4%	18.7%
Rated output (P_{mpp}) at NOCT	213.1 Wp	216.8 Wp	220.5 Wp	224.1 Wp
Rated voltage (V_{mpp}) at NOCT	29.58 V	29.79 V	30.00 V	30.21 V
Rated current (I_{mpp}) at NOCT	7.20 A	7.28 A	7.35 A	7.42 A
Open circuit voltage (V_{oc}) at NOCT	36.60 V	36.93 V	37.01 V	37.15 V
Short circuit current (I_{sc}) at NOCT	7.67 A	7.71 A	7.79 A	7.82 A
Temperature coefficient (P_{mpp})	- 0.380%/°C			
Temperature coefficient (I_{sc})	+0.042%/°C			
Temperature coefficient (V_{oc})	- 0.284%/°C			
Normal operating cell temperature (NOCT)	46±2°C			
Maximum system voltage (IEC/UL)	1000V _{DC} or 1500V _{DC}			
Number of diodes	3			
Junction box IP rating	IP 67			
Maximum series fuse rating	15 A			

* Measurement tolerance +/- 3%

STC: Irradiance 1000W/m², Cell Temperature 25°C, AM=1.5

NOCT: Irradiance 800W/m², Ambient Temperature 20°C, AM=1.5, Wind Speed 1m/s

CURVE



PACKING SPECIFICATIONS

① Weight (module only)	18.3 kg / 40.34 lbs
② Packing unit	31 pcs / box
Weight of packing unit (for 40'HQ container)	616 kg / 1358 lbs
Number of modules per 40'HQ container	868 pcs

① Tolerance +/- 1.0kg

② Subject to sales contract

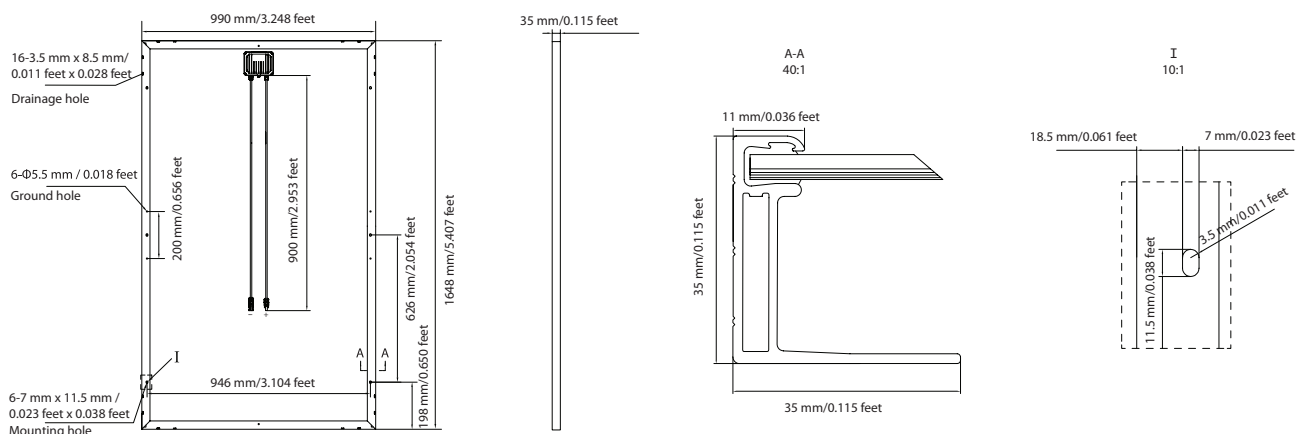
MECHANICAL SPECIFICATIONS

Outer dimensions (L x W x H)	1648 x 990 x 35 mm 64.88 x 38.98 x 1.38 in
Frame technology	Aluminum, silver / black anodized
Module composition	Glass / EVA / Backsheet (white)
Front glass thickness	3.2 mm / 0.13 in
① Cable length (IEC/UL)	900 mm / 35.43 in
Cable diameter (IEC/UL)	4 mm ² / 12 AWG
② Maximum mechanical test load	6000 Pa
Fire performance (IEC/UL)	Class C (IEC) or Type 1 (UL)
Connector type (IEC/UL)	MC4 compatible

① Option: 900(+) / 600(-) mm or 1000 mm for defined projects in advance.

② Refer to Astronergy crystalline installation manual or contact technical department.
Maximum Mechanical Test Load=1.5×Maximum Mechanical Design Load.

MODULE DIMENSION DETAILS



© Chint Solar (Zhejiang) Co., Ltd. Reserves the right of final interpretation, please contact our company to use the latest version for contract.